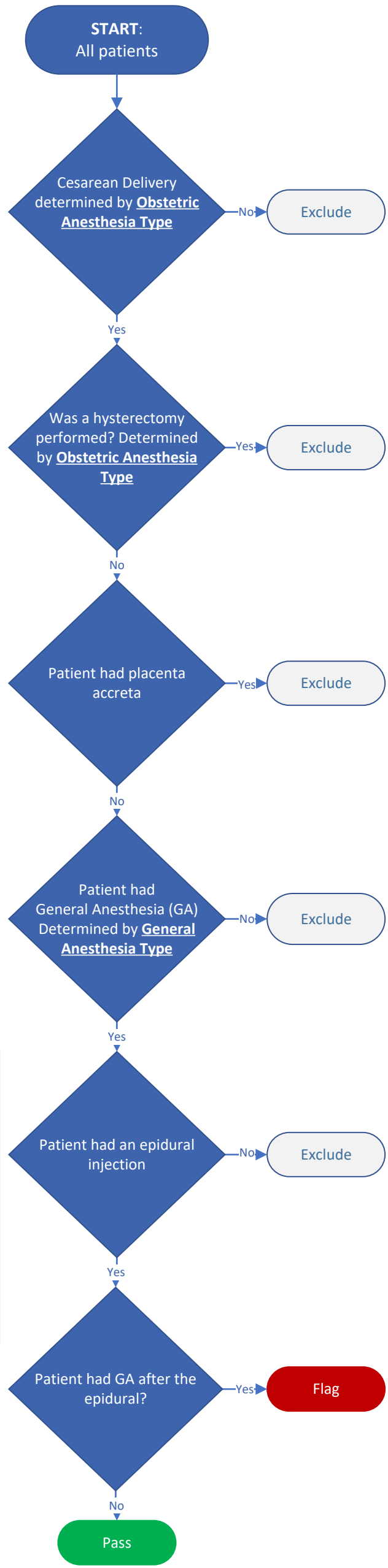


GA-03-OB : General Anesthesia Administered after Epidural for Cesareans

GA-03-OB: Percentage of cesarean delivery cases where general anesthesia was administered after epidural anesthesia.



Placenta Accreta Exclusion Criteria:
If any of the following ICD codes were used case will be excluded:

- O43.2, O43.21, O43.22, O43.22
- O43.[211, 212, 213, 219, 221, 222, 223, 229, 231, 232, 233, 239]

Cesarean Delivery procedure is determined by the **'Obstetric Anesthesia Type' phenotype**

Use of general anesthesia is determined by the **'Anesthesia Technique: General' phenotype**

Use of neuraxial anesthesia is determined by the **'Anesthesia Technique: Neuraxial' phenotype**

Cesarean Hysterectomy and Conversion (Cesarean Hysterectomy Portion) determined by **'Obstetric Anesthesia Type'**

GA-03-OB : General Anesthesia Administered after Epidural for Cesareans

Measure Summary: Percentage of cesarean delivery cases where general anesthesia was administered after epidural injection.

Placenta Accreta Exclusion Criteria:
 If any of the following ICD codes were used case will be excluded:

- O43.2, O43.21, O43.22, O43.22
- O43.[211, 212, 213, 219, 221, 222, 223, 229, 231, 232, 233, 239]

Cesarean Delivery procedure is determined by the **'Obstetric Anesthesia Type' phenotype**

Use of general anesthesia is determined by the **'Anesthesia Technique: General' phenotype**

Use of neuraxial anesthesia is determined by the **'Anesthesia Technique: Neuraxial' phenotype**

Cesarean Hysterectomy and Conversion (Cesarean Hysterectomy Portion) determined by **'Obstetric Anesthesia Type'**

